

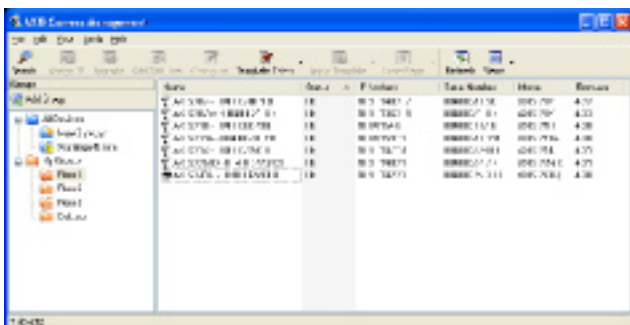
*Efficient management tool for your  
Axis network video products*

With this software installed on your Windows PC you can automatically locate multiple Axis video products on the local network using standard network protocols. Furthermore, you can set the IP addresses, configure, show connection status and manage firmware upgrades of multiple Axis video products sequentially or in parallel. Remote video devices with known IP addresses can also be managed.

This flexible management software simplifies management of your Axis video products over the network.

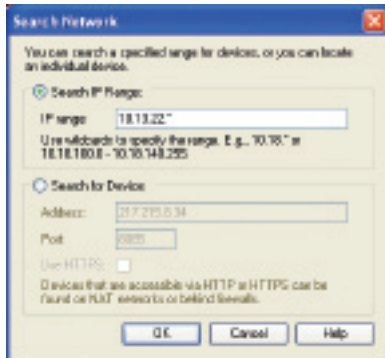


- Locate Axis video products on the network
- Set IP addresses
- Configure single or multiple units
- Show status of local and remote video devices
- Upgrade firmware of multiple units sequentially or in parallel
- Use standard Internet protocols



## Specifications

<b>Supported products</b>	AXIS 2xx video products with firmware version of 4.03/4.10 or higher except AXIS 205/230/250S/262/292	<b>Firmware upgrade</b>	HTTP or HTTPS
<b>Finding new devices</b>	The local network is monitored periodically for new video devices	<b>Logging</b>	Activity log with sort/search functions showing performed actions and changed unit status
<b>Device grouping</b>	Groups for new devices Devices with changed status User defined groups	<b>Security</b>	HTTPS encryption used between application and video device if supported by video device  Video device passwords are remembered and encrypted and can only be used by the user who defined them  Only standard network protocols used to locate units, firmware upgrade and check status
<b>IP setting</b>	Set fixed IP address from AXIS Camera Management manually or within a defined range	<b>Language</b>	English
<b>Remote devices support</b>	Known IP addresses of supported remote devices, outside the Local Area Network, can be entered manually	<b>Minimum system requirements</b>	Pentium III CPU 1 GHz or higher, or equivalent AMD 256 MB RAM XGA (1024x768) video card. Windows XP Pro SP2, Windows 2000 SP4, Server 2003 SP1 Microsoft .NET 2.0 (included in installation package) For other operating systems and browsers see <a href="http://www.axis.com/techsup">www.axis.com/techsup</a>
<b>Configuration</b>	Single unit configuration or multiple unit configuration using templates. Templates can be created from an existing unit or from the beginning	<b>Supported protocols</b>	IP, HTTP, HTTPS, SSL/TSL, TCP, UPnP (SSDP), ICMP, Bonjour More information on protocol usage available at <a href="http://www.axis.com">www.axis.com</a>
<b>User management</b>	List/add/edit/remove users		
<b>Unit status</b>	Reachable status shown for known devices		
<b>Firmware upgrade support</b>	Upgrade of multiple units sequentially or in parallel Automatic download of latest available firmware from Axis		



The AXIS Camera Management tool finds video devices connected to local as well as remote networks



Easy assignment or change of IP address



Single or multiple Axis video products of different models can easily be firmware upgraded sequentially or in parallel

AXIS 211  
Network Camera

AXIS 221  
Day & Night  
Network Camera

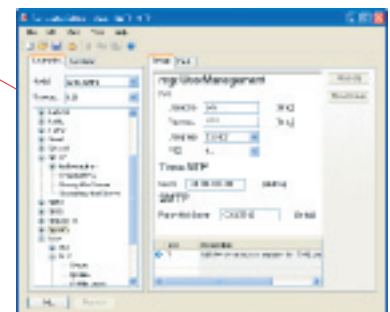
AXIS 213 PTZ  
Network Camera

AXIS 232D  
Network Dome  
Camera

AXIS 241S  
Video Server



AXIS Camera  
Management



Easy configuration of Axis video products



AXIS 214 PTZ  
Network Camera

AXIS 221  
Day & Night  
Network Camera

[www.axis.com](http://www.axis.com)

**AXIS**  
COMMUNICATIONS  
Make your network smarter