

# Introducing Cisco 836 and SOHO 96 Secure Broadband Routers

Cisco.com

**Advanced security for data, voice, and  
video access ideal for small offices and  
teleworkers**

**Hari Harikrishnan ([harikris@cisco.com](mailto:harikris@cisco.com))  
Product Manager, Cisco 836/837, SOHO 96/97**

**Mar 2003**

# Introducing the Cisco 836 and SOHO 96 Secure Broadband Routers

Cisco.com

**Advanced security for data, voice,  
and video access ideal for small  
offices and teleworkers**

**New Models**



**Cisco 836**

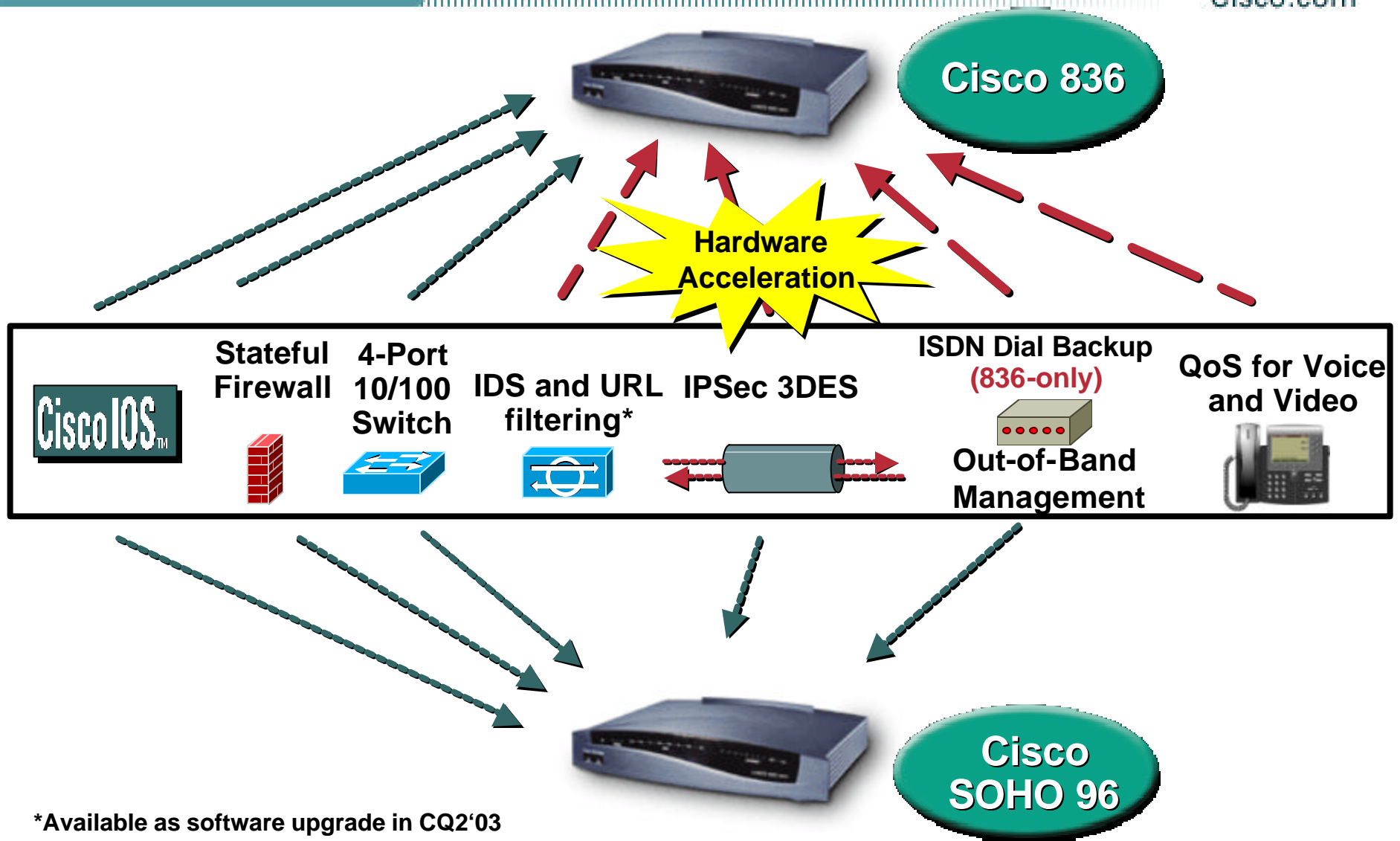


**Cisco SOHO 96**

- **Cisco 836 ADSL-over-ISDN Broadband Router**
- **Cisco SOHO 96 ADSL-over-ISDN Broadband Router**

# Extending Integrated Security and Advanced Services to the Edge

Cisco.com



\*Available as software upgrade in CQ2'03

# Cisco 836 ADSL-over-ISDN Broadband Router Features

Cisco.com

**Advanced security for data, voice, and video access ideal for small offices and teleworkers**

## Advanced Security and Performance for Enterprise-Class VPNs

Hardware-Assisted Encryption VPN throughput (2.0 Mbps aggregate with IMIX traffic) 3DES encryption, Cisco Easy VPN remote, AES\*, IDS\*, TACACS+, RADIUS



### Three Software Images:

- Base: IP FW/VPN with 3DES (default)
- PLUS: IP FW/VPN with QoS and HW 3DES acceleration
- PLUS dial backup: All features in PLUS and ISDN dial backup

## High, Quality Secure Voice and Video

Low Latency Queuing (LLQ), QoS (Class-Based Traffic Shaping, CAR, LLQ over VPN\*, LFI), Multicast

## Manageable, Scalable, and Reliable Access

Integrated ISDN S/T port for dial backup and out-of-band mgmt, HSRP, EIGRP, Cisco Router Web SetUp tool (CRWS), integration with Cisco IE 2100 Management Appliance

\*Available as software upgrade in CQ2'03

# Cisco 836 ADSL-over-ISDN Router Hardware

Cisco.com

## 10/100 MB Ethernet Switch

Connect to Ethernet network devices on the LAN

## Console Port

3DES IPsec  
Hardware  
Acceleration



ISDN  
S/T Port

ADSL-over-ISDN WAN Port  
Connects to SP network

## Processor

- Motorola RISC

## Memory

- DRAM Default: 32MB
- DRAM Max: 48MB
- FLASH Default: 8 MB
- FLASH Max: 24 MB

# Cisco SOHO 96 ADSL Broadband Router Features

Cisco.com

**Affordable, secure, easy-to-use, broadband access for small offices**

## Secure Internet Access

Stateful inspection firewall, software-based 3DES encryption

## Easy Setup and Deployment

Cisco Router Web SetUp tool

## Advanced Management Features for Low Cost of Ownership

- Remote out-of-band mgmt via ISDN S/T port
- Integration with Cisco IE2100 Management Appliance



**One Software Image:  
IP FW/VPN**

# Cisco SOHO 96 Router Hardware

Cisco.com

## 10/100 MB Ethernet Switch

Connect to Ethernet network devices on the LAN

## Console Port



## ISDN S/T Port

ADSL-over-ISDN WAN Port  
Connects to SP network

### Processor

- Motorola RISC

### Memory

- DRAM Default: 32MB
- DRAM Max: 32MB
- FLASH Default: 8 MB
- FLASH Max: 8 MB

# Cisco 836 and SOHO 96 ADSL and ISDN Specifications

Cisco.com

- **ADSL Standards**
  - ETSI 101-388 ADSL-over-ISDN
  - UR-2 Specification (Deutsche Telekom)
  - Annex B ITU ADSL-over-ISDN (planned)
- **Supported DSLAMs**
  - Alcatel: ASAM 1000 and 7300
  - Lucent Stinger
  - ECI (UR-2 support)
  - Siemens: XpressLink 2.0 and 2.1 (UR-2 support)
- **ISDN Standards (for ISDN S/T port)**
  - CTR3 (ETSI, NET3)
  - VN3/4/5



# Cisco Router Web SetUp Tool (CRWS)

Cisco.com

- **Easy-to-use graphical tool for installation**

End users/resellers

Service-provider technicians  
unfamiliar with CLI

- **Features and Benefits**

Quick setup: just add PPP  
username/password + router name

Standard configuration templates with  
modifiable parameters

Router status monitoring and trouble-  
shooting

Tool resides on Flash: no CD software  
required to install



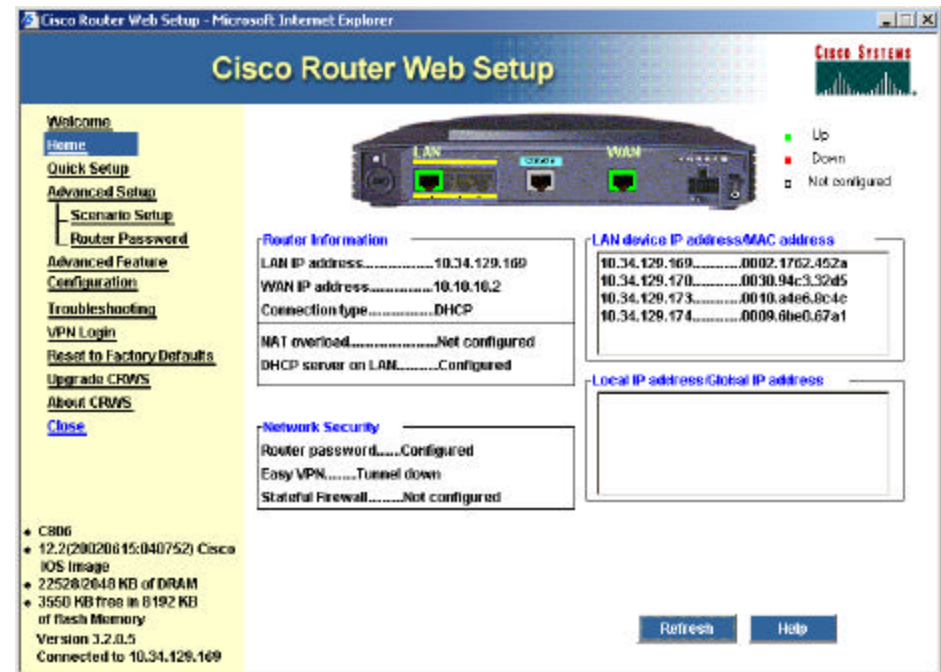
# New CRWS Features

Cisco.com

- Ability to bring up/down the VPN tunnel
- Ability to see what the FW is inspecting
- Dashboard with Router Status on home-page:

Showing: IP, VPN, FW, LAN-clients, etc.

- Support for out-of-band management ports (ISDN port or virtual AUX port)
- New features: DHCP renew, block remote management, setup of management via ISDN/AUX port and View Firewall definition



# Cisco 836 and SOHO 96 Comparison

Cisco.com

## Cisco SOHO 96 Secure Broadband Router



### Secure Internet Access

Stateful inspection firewall,  
software-based 3DES encryption

### Easy Setup and Deployment

Cisco Router Web Set Up tool

### Advanced Management Features for Low Cost of Ownership

Out-of-band mgmt via ISDN port  
Cisco IOS Software  
Integration with Cisco IE 2100  
Management Appliance

## Cisco 836 Secure Broadband Router



### Advanced Security and Performance for Enterprise-Class VPNs

Stateful firewall, hardware-assisted encryption  
VPN Easy VPN, AES\*, IDS\*, URL filtering\*

### High-Quality Secure Voice and Video

QoS and Multicast

### Manageable, Scalable, and Reliable Access

Integrated ISDN S/T port for out-of-band  
management and Dial Backup  
Cisco Router Web SetUp Tool  
Cisco IOS remote management  
Cisco Easy VPN  
Cisco IE 2100 and VPN Solutions Center

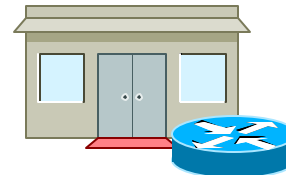
# Integrated Network Security with Cisco SOHO 96 and 836 Routers

Cisco.com

- Integrating **rich security features** into the network edge
- Extending advanced IP services to **small remote offices, teleworkers, and small businesses**
- Delivering **high performance and simple management** to small offices
- Leveraging **Cisco IOS Software QoS, Routing and reliability**



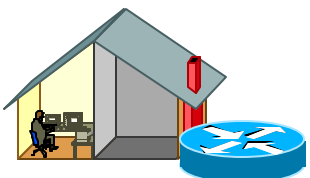
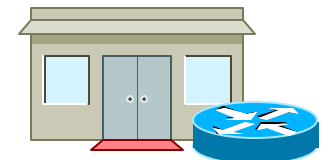
**Cisco SOHO 96  
Secure Broadband  
Routers**



**Small Business**



**Cisco 836 Secure  
Broadband  
Routers**



**Small Remote  
Office and  
Corporate  
Teleworker**

# Availability

Cisco.com

## Volume Availability in March 2003

### Cisco SOHO 96 Secure Broadband Router



- ADSL-over-ISDN
- Stateful Firewall
- 3DES SW Encryption
- Out-of-band mgmt via ISDN port

### Cisco 836 Secure Broadband Router



- ADSL-over-ISDN
- Firewall
- 3DES SW and HW Encryption
- QoS
- ISDN dial backup and out-of-band mgmt via integrated ISDN S/T port

# CISCO SYSTEMS



EMPOWERING THE  
INTERNET GENERATION