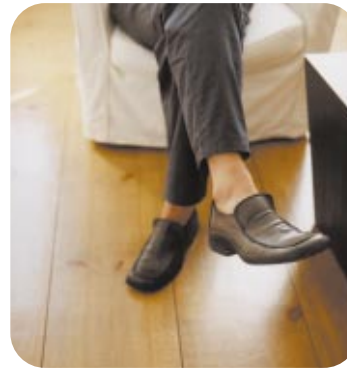


simplify



quality



hp photosmart 315

digital camera

The digital camera with point-and-shoot simplicity.

hp photosmart 315
digital camera

data sheet: specifications

Quality results

- 2.1 MP resolution for quality results in all popular photo sizes
- Capture close-up shots with 2.5x digital zoom
- Instantly preview your pictures on the 1.8" color LCD
- Frame your pictures the way you want them with variable 2.5x digital zoom

Ease of use

- Easy-to-use point and shoot camera design
- Capture and share photos effortlessly
- Real-image viewfinder makes it easy to frame your shots
- Instantly preview and review your pictures on the 1.8" color LCD
- Auto focus lets you capture the moment quickly and sharply
- Auto red-eye reduction

Fast, downloading of images

- Fast wireless printing with HP JetSend infrared
- Quick and easy connections to printers, computers and internet with USB and HP JetSend infrared
- Easy sharing, downloading, saving, printing and e-mailing of photos through HP Photo Imaging Software
- Removable, reusable 8MB CompactFlash™ card stores up to 80 photos



hp photosmart 315 digital camera

data sheet: specifications/ system requirements
box contents/imaging software

specifications

Sensor	2.1 MegaPixel 1/2.7" CCD								
Color Depth	30-bit (10 bits x 3 colors)								
Resolution	2.1 MP (1600 x 1200 and 640 x 480 pixels)								
Memory	average number of photos per 8 MB card* <table border="1"> <tr> <th>JPEG quality level</th><th>No. pics</th></tr> <tr> <td>superfine</td><td>10</td></tr> <tr> <td>fine</td><td>20</td></tr> <tr> <td>basic</td><td>80</td></tr> </table> <p>*CompactFlash Type I</p>	JPEG quality level	No. pics	superfine	10	fine	20	basic	80
JPEG quality level	No. pics								
superfine	10								
fine	20								
basic	80								
Lens	6-element glass lens f/2.8 TTL auto focus 5.8 mm (38 mm equivalent)								
Zoom	1.5x, 2x, 2.5x variable digital zoom								
Shooting Modes	Single shot								
Exposure Control	Auto exposure								
Aperture	f/2.8, f/3.9, f/5.6, f/9.8								
Shutter Speed	1/750 to 2 sec.								
Focus	TTL auto focus 30 cm to infinity								
Sensitivity	ISO 100								
Metering	TTL								
White Balance	Auto								
Self Timer	10 sec. delay								
Viewfinder	Separate optical viewfinder (real image)								
Flash	Built-in flash with range up to 3 meters Flash modes: auto, auto with red-eye, forced on, and forced off								
LCD	1.8" color LCD with 71,760 pixels 4x playback magnification Thumbnails or full screen views								
Image Control Functions	Delete, Lock, Rotate, and Select to Print (DPOF) Send images via Ir to JetSend printers								
Power	4 AA batteries (included) or optional AC adapter								
Interfaces	USB to PC or Mac, HP JetSend infrared Standard tripod mount								
Dimensions	128 x 68 x 33 mm (Int.) 5 x 2.7 x 1.3 in (US)								
Weight	227 g without batteries (Int.) 8 oz. without batteries (US)								
Warranty	HP 1 year exchange warranty								

Camera UI Localization	English, French, German, Spanish, Italian, Japanese	
Product Numbers	315 315xi 315vm	C8452A C8455A C8453A
Country of Origin	Malaysia	

box contents

- Camera
- 8 MB CompactFlash™ memory card
- 4 AA Alkaline batteries (not rechargeable)
- Wrist strap
- USB cable
- Tiffen accessories catalog
- HP shopping catalog
- 315 Quick Start guide
- 315 basic manual
- HP Photo Imaging Software and ACD Systems Viewer (PC only)
- Adobe PhotoDeluxe Business Edition Software (PC/Mac; 315xi only)
- ArcSoft PhotoMontage™ (PC/Mac)
- ArcSoft PhotoImpression™ 2000 (PC/Mac)

system requirements

pc

- Windows 98, 2000 Professional, Me, NT 4.0*
- 133 MHz Pentium processor or better
- 32 MB RAM (64 MB recommended)
- 800 x 600; 16-bit color display
- 150+ MB free disk space
- USB interface
- CD-ROM drive (sound card and speakers recommended)

* NT 4.0 requires 64 MB RAM and does not support USB.
CompactFlash card reader required instead. (Card reader purchased separately)

mac

- 233 MHz Power PC
- OS 8.6 or higher
- 32 MB RAM (64 MB recommended)
- 150 MB free disk space
- CD-ROM drive
- USB interface
- 800 x 600; 16-bit color display

hp photo imaging software

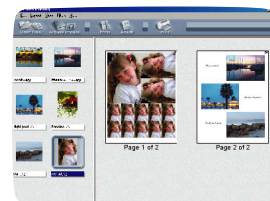


Camera unload software

One click brings up a suite of software tools for downloading your photos from your camera so you can view, browse, edit and print.

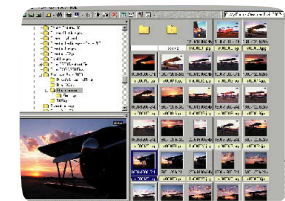


HP email portal
Automatically resizes and compresses your images for faster transfer.



HP photo printing software

Rotate, crop, enlarge, correct color and exposure, and then create album pages of your favorite images.



ACDSee software

Browse your images quickly and then create album pages of your favorite images.

Visit our website at www.photosmart.com

Microsoft, Windows, NT are U.S. registered trademarks of Microsoft Corporation.
Technical information is subject to change without notice.

