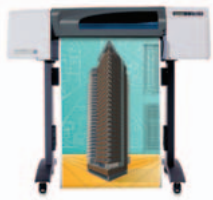


HP Designjet 500 Plus Printer series



The HP Designjet 500 Plus Printer is a versatile large format printer at a great price, delivering outstanding line drawings and photo quality renders with smooth tone transitions. The printer now supports seamless HP-GL/2 and Adobe PDF printing.



HP Designjet 500 Plus
(24-inch) Printer

Ideal for architects, interior designers and professionals in engineering, construction and mechanical design, working from home or in small offices in workgroups of up to 3 people who need affordable, high quality, large format printing up to A0+ size.

Get outstanding line drawings and photo quality renders fast and at a great price.

- Reduce your click-to-print time with built-in HP-GL/2 card processing the vector data in the printer and benefit from Adobe® Acrobat® Professional Software enabling a seamless Adobe PDF printing workflow.
- Save yourself time: no need to trim the plots with a 5 mm margin on all sides of a page.
- See a difference in quality with lines as thin as 0.04 mm and an accuracy of $\pm 0.2\%$.
- Visualise your work with photo quality renders using HP Colour Layering Technology and up to 1200 dpi resolution.



HP Designjet 500 Plus
(42-inch) Printer

Save yourself time with this fast and easy-to-use printer and cut the overall running costs.

- Print speeds of up to 90 seconds per A1 line drawing and 7.9 m² of full colour images per hour.
- Three portrait A3+ images (330 x 483 mm) fit side by side¹.
- Easy-to-install drivers are intuitive to use; the control panel is simple to navigate.
- Unattended printing is hassle-free with modular 69 cc ink cartridges, long-life printheads, 45.7 m long media rolls, automatic cutting and stacking of prints in the media².
- USB and parallel ports, optional network card.

Get your colours right with the EFI Designer Edition XL RIP for HP Designjet 500ps Plus Printer.

- The EFI Designer Edition XL RIP for HP Designjet 500ps Plus Printer allows you to process complex graphic files and perform colour management simultaneously.
- Get accurate results even without colour expertise using several pre-set modes.
- Preview JPEG, TIFF, PDF or Adobe® PostScript® 3™ files, check the layout and media orientation and avoid trial errors.
- Cut printing time and costs with a nesting feature positioning the printouts efficiently on media.
- Get full support for Mac OS X system.



Adobe Acrobat Professional
Software



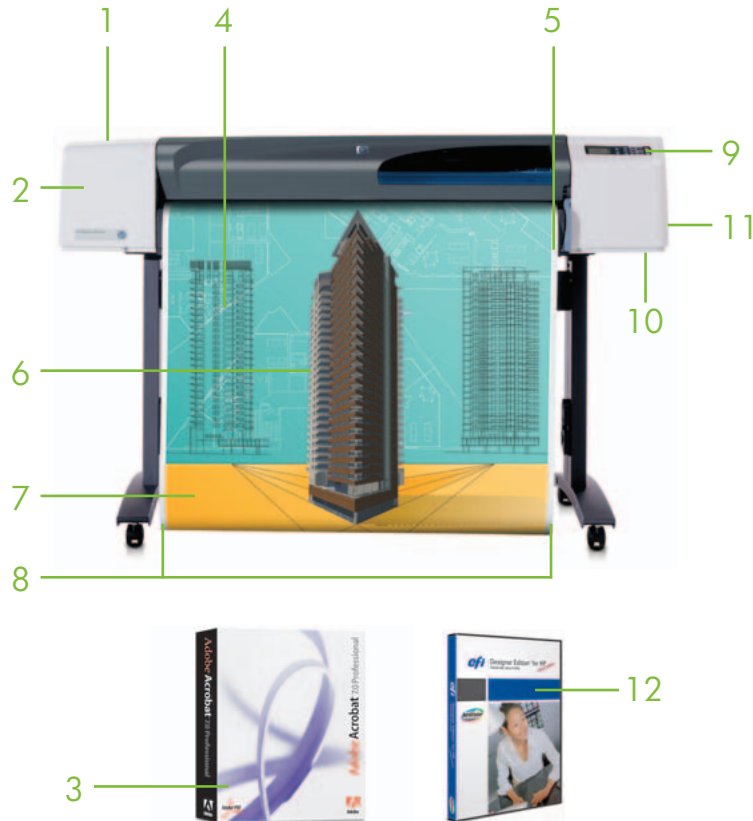
EFI Designer Edition XL RIP
for HP Designjet 500ps Plus
Printer

¹ The printer comes in two sizes, with a media path that is either 1067 mm (42-inch) or 610 mm (24-inch) wide. Three portrait A3+ images (330 x 483 mm) fit side by side only available on 42-inch model.

² Stand and media bin are optional on the 610 mm model.

HP Designjet 500 Plus Printer series

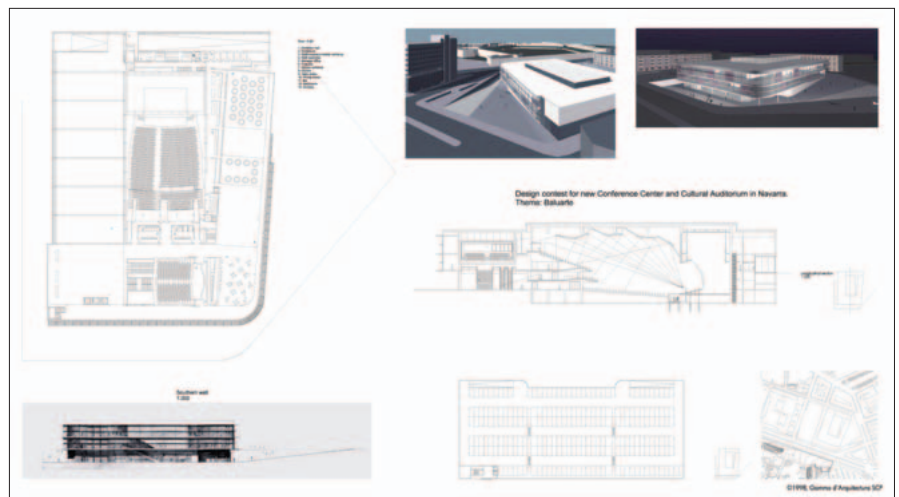
1. Seamless printing from a wide range of technical and graphics applications
2. Fast processing of printing data performed in the embedded HP-GL/2 card
3. Adobe® PDF printing and document management workflow with Acrobat Professional software included in the box
4. Precise line drawings with accuracy of $\pm 0.2\%$ and minimum line width of 0.04 mm
5. No need to trim the plots with 5 mm print margins on all sides
6. Photo quality renders with resolution of up to 1200 x 600 dpi and HP Colour Layering Technology
7. Prints as fast as A1 format within 90 seconds (line drawing)
8. Maximum media width: 1,067 mm for 42-in models, 610 mm for 24-inch models, full support for metric sized media (A1 and A0)
9. LCD with 5 front-panel buttons
10. USB and parallel ports for direct connection
11. Easy networking with optional HP JetDirect cards
12. Enhanced colour accuracy and consistency with EFI Designer Edition XL RIP for HP Designjet 500ps Plus Printer



The embedded HP-GL/2 card enables the HP Designjet 500 Plus printers to process and output data easily from a wide range of CAD applications, independently of the operating system. Common legacy files – typically created with PLT extension – create a drawing using standard HP-GL/2 language which can be sent directly to the printer. The printer's capability to accept data in the HP-GL/2 format brings two important benefits:

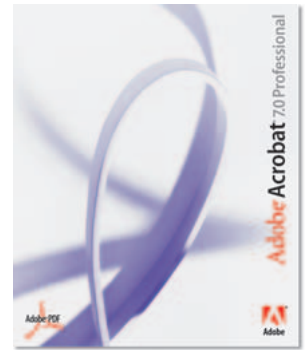
- The printing data carried within vector-based print files is significantly smaller than in its rasterised form. The total printing throughput increases as there is no longer a bottleneck between the printer and a computer. Moreover a small workgroup of users can share the printer over the network, without any time-outs or delays caused by insufficient printer memory or low data-transfer bandwidth.
- As the printing data in HP-GL/2 format is processed (ie. rasterised) in the printer, the performance of a host computer is not impacted by the printing process. This means the user can continue the design work in the CAD application almost without any interruption.

The standard printer memory addressed by the HP-GL/2 card is 32 MB and can be upgraded to 128 MB. An HP JetDirect 620n network card is recommended for a shared environment within a small workgroup.



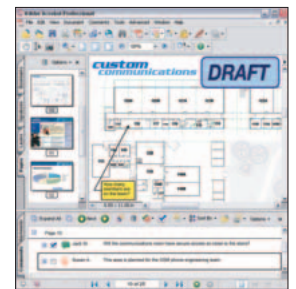
Partner solutions included with HP Designjet 500 Plus Printer Series Adobe® Acrobat® Professional software

With Acrobat Professional software, your project teams can easily and efficiently share, mark up, review, print and archive complex drawings, specifications, and project information. Acrobat Professional enables you to convert and combine multiple file types into a single, searchable Adobe PDF file. With professional commenting tools, support for 3D designs and large-format CAD drawings, and more, Acrobat Professional helps streamline collaboration, protect intellectual property, and store project information — from the initial bid through printing of required project documentation, build, archiving and ongoing maintenance.



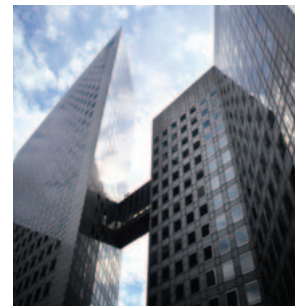
With Acrobat Professional software, you can:

- Protect design information and intellectual property from unauthorised access during a project
- Assemble project binders as a single Adobe PDF file containing drawings, 3D designs, and project information across your extended team
- Publish and distribute 3D designs to anyone on the project, reducing errors and design changes
- Print all kinds of large format documents seamlessly and without image quality loss on any HP Designjet printer



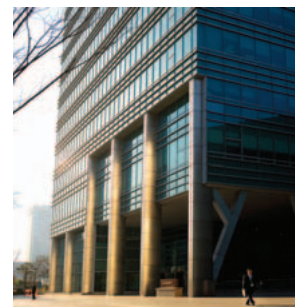
Partner solutions included with HP Designjet 500ps Plus Printer Series EFI Designer Edition XL RIP

It is now standard practice to present to clients with architectural or interior design projects using photo-realistic visualisations, often layered with the pictures documenting the existing environment. Getting just a 'good enough' image quality on a large format interpretation of the creative idea is no longer sufficient. Clients expect the printed colours to match the reality.



With the latest version of EFI Designer Edition XL RIP you can get the colours right, print after print. While the software has been primarily developed for the needs of designers and photographers, it provides a number of benefits to customers printing renders and visualisations:

- No matter how complex the rendered file is, the RIP takes care of the proper colour management.
- Simply pick the right pre-defined media profile and print-mode to ensure the colour conversion is performed correctly.
- Chose one of the pre-set colour management modes to get either great looking and saturated colours or the most accurate match with the actual colour.
- The RIP can handle a number of industry standard file formats like JPEG, TIFF, PDF or PostScript.
- Avoid media waste using the layout preview, and save printing time and supplies consumption with the nesting feature that can efficiently place different plots on the selected media.



Technical specifications

Print technology	HP Thermal Inkjet		
Print quality	Up to 1200 x 600 dpi		
Colour technology	HP Color Layering Technology		
Number of inks	4 (Black, Cyan, Magenta, Yellow)		
Ink types	Black: HP pigment ink; Cyan, Magenta, Yellow: HP dye-based ink		
Print speed	Economic quality: 7.9 m ² /h. Productivity quality: 3.3 m ² /h. Photo quality: 2 m ² /h		
Line	Line accuracy: ± 0.2%. Minimum width: 0.0423 mm		
Print languages	500 Plus: HP-GL/2, HP-PCL3-GUI; 500ps Plus: Adobe® PostScript® 3™ (using supplied EFI Designer Edition XL software RIP), HP-GL/2, HP-PCL3-GUI;		
Memory	Standard: 32 MB; Maximum: 128 MB		
Print margins (mm)	Roll	Sheet	
	top: 5 mm (with HP-GL/2 driver)	17 mm	
	bottom: 5 mm (with HP-GL/2 driver)	17 mm	
	left: 5 mm	5 mm	
	right: 5 mm	5 mm	
Media types	Paper (plain, inkjet, coated, heavyweight coated, high-gloss, semi-gloss, natural tracing, photo), Clear film, Matte film		
Media sizes	Standard: 500 Plus, 500ps Plus (24 in): ISO A1, ISO A2, ISO A3, ISO A4; 500 Plus, 500ps Plus (42 in): ISO A0, ISO A1, ISO A2, ISO A3, ISO A4. Custom: 500 Plus, 500ps Plus (24 in): 210 x 210 to 610 x 15240 mm; 500 Plus, 500ps Plus (42 in): 210 x 210 to 1067 x 15240 mm		
Maximum media length	Roll: 45.7 m. Sheet: 1897 mm		
Maximum media width	500 Plus, 500ps Plus (24 in): 610 mm; 500 Plus, 500ps Plus (42 in): 1067 mm		
Media handling	Single sheet feed, roll feed, automatic cutter		
Interface and connectivity	Standard: Centronics parallel, IEEE-1284-compliant (ECP), USB (compatible with USB 2.0 specifications) Microsoft® Windows® 98 SE, Me, 2000, XP and OS X v.10.2.3 and higher. Optional: HP Jetdirect 620n (EIO) Internal Print Server		
Control panel	Front LCD, 5 front-panel buttons		
Drivers included	Microsoft® Windows® (95, NT® 4.0) without USB, Microsoft® Windows® (98, 2000, XP) with USB, drivers for Macintosh (OS X v.10.2.3 or higher)		
Software	HP Designjet software for Windows and Macintosh, Adobe Acrobat Professional Software, EFI Designer Edition XL RIP for HP Designjet 500ps Plus Printer (available only with 500ps Plus models)		
Operating systems compatibility	Microsoft® Windows® 95, 98, NT 4.0, 2000, XP; Mac OS X v.10.2.3 and higher; ZehRaster for UNIX		
Minimum system requirements	Microsoft® Windows® 95, 98, NT® 4.0 or 2000, 32 MB RAM, 500 MB free on hard disk, Mac OS X v.10.2.3 or higher		
Recommended system requirements	Microsoft® Windows® 95, 98, Me: Pentium® I, 133 MHz, 64 MB RAM, 320 MB available hard disk space; Microsoft® Windows® NT® 4.0: Pentium® II, 733 MHz, 128 MB RAM, 2 GB available hard disk space; Microsoft® Windows® 2000, 2003 Server: Pentium® II, 733 MHz, 256 MB RAM, 2 GB available hard disk space; Microsoft® Windows® XP: Pentium® IV, 1 GHz, 256 MB RAM, 2 GB available hard disk space		
Power	Requirements: 100 to 240 AC (+/- 10%) auto-ranging, 50/60 Hz, 3 amps maximum. Consumption: 150 watts maximum		
Dimensions (w x d x h)	Out of package: 42" model: 1690 x 674 x 1100 mm; 24" model: 1253 x 470 x 349 mm		
Weight	Out of package: 42" model: 45 kg; 24" model: 38.5 kg		
Operating environment	Operating temperature: 15 to 35° C. Recommended operating temperature: 5 to 40° C. Operating humidity: 20 to 80% RH. Operating humidity recommended: 15 to 80% RH. Storage temperature: -40 to 60° C. Noise level per ISO 9296: sound power: LwAd 65 dB(A). Sound pressure: LpAm 52 dB(A)		
Certifications	Safety: Compliant with the requirements for ITE products: EU Low Voltage Directive, USA and Canada CSACertified for US & Canada, Mexico NOM-1-NYCE, Argentina IRAM, China CCLB & CCEE, Singapore PSB, Russia GOST, Poland PCBC., EMC certifications: Compliant with the requirements for Class B ITE products (Class A when connected to LAN cables): EU EMC Directive, USA FCC rules, Canada DOC, Australia ACA, New Zealand MoC, China CCLB, Class A for Korea MIC, Taiwan BSMI		
Warranty	One-year next business day on-site response		

Ordering information

C7769F HP Designjet 500 Plus (24-inch) Printer, spindle, power cord, ink cartridges, printheads, integrated HP-GL/2 card, Adobe Acrobat Professional Software, drivers for Microsoft Windows (including AutoCAD), user documentation.

C7769G HP Designjet 500ps Plus (24-inch) Printer as C7769F plus EFI Designer Edition XL software RIP for Macintosh and Microsoft® Windows®

C7770F HP Designjet 500 Plus (42-inch) Printer as C7769F plus printer stand, media bin

C7770G HP Designjet 500ps Plus (42-inch) Printer as C7769F plus EFI Designer Edition XL software RIP for Macintosh and Microsoft® Windows®, printer stand, media bin

Accessories	
C2387A	HP DesignJet SIMM 64MB Memory Module
C2388A	HP DesignJet SIMM 128MB Memory Module
C2389A	HP 24-inch Spindle
C2390A	HP 42-inch Spindle

Ink supplies	
C4844AE	HP 10 Black Ink Cartridge
C4911A	HP 82 69 ml Cyan Ink Cartridge
C4912A	HP 82 69 ml Magenta Ink Cartridge
C4913A	HP 82 69 ml Yellow Ink Cartridge
C4810A	HP 11 Black Printhead
C4811A	HP 11 Cyan Printhead
C4812A	HP 11 Magenta Printhead
C4813A	HP 11 Yellow Printhead

Service & support	
H5652A/E	HP Care Pack, Next Business Day On Site, Response, 3 years
H5652A/E	HP Care Pack, Next Business Day On Site Response, 3 years
H4610PA/PE	HP Care Pack, Post Warranty, Next Business Day On Site, 1 year
H3642E	HP Care Pack, Next Business Day On Site, 4 years
H3643E	HP Care Pack, Next Business Day On Site, 5 years
H4518A/E	Installation & Network Configuration for 1 Network HP Designjet

For a complete list of supplies, accessories and services, please refer to <http://www.hp.com/go/designjet>

<http://www.hp.com> <http://www.hp.com/go/designjet>



©2006 Hewlett-Packard Development Company, L.P. The information contained herein is subject to change without notice. The only warranties for HP Products and services are set forth in the express warranty statements accompanying such products and services. Nothing herein should be construed as constituting an additional warranty. HP shall not be liable for technical or editorial errors or omissions contained herein.

Published in EMEA 04/06 4AA0-2371EEE

