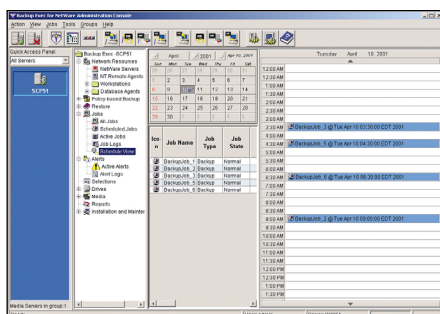
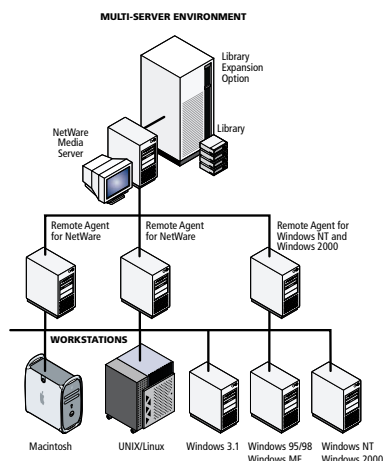
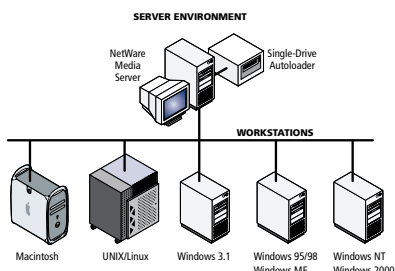


# VERITAS Backup Exec™

## for NetWare



Calendar View Scheduler allows easy viewing of scheduled jobs and backup operations.

*“Novell is dedicated to providing its customers with reliable and secure applications for its industry-leading NetWare and eDirectory platforms, and VERITAS Software has provided superior level data protection services for not only our internal directory-enabled, mission-critical systems but also for our NetWare customers.”*

– Carleton Watkins

Director of Worldwide Developer Support  
Novell, Inc.

## Redefining NetWare Data Protection

Today's complex networks demand a fast, reliable, easy-to-use backup solution...whether it is mission-critical data on a Novell NetWare server, a remote user's workstation or the entire operating system. When recovery is required, it should be simple to accomplish, fast to complete and perform without fail — every time.

**VERITAS Backup Exec™ for NetWare 9.0**, a pure IP solution, delivers the latest backup and restore technology for quickly, reliably and simply protecting server and workstation data. Backup Exec's redesigned graphical user interface provides enhanced functionality and manageability. Remote agents for NetWare\*, Windows NT and Windows 2000 servers\*, as well as included agents for Windows 95/98/ME, Windows NT and Windows 2000 workstations, Windows XP Professional, Macintosh, UNIX and Linux offer cross-platform protection. Use options for Intelligent Disaster Recovery™, Library Expansion and Open File backup to further customize the NetWare data protection environment. Create storage area networks (SANs) that share tape libraries dynamically between multiple NetWare, Windows NT or Windows 2000 servers with the SAN Shared Storage Option. Features for media management, reading CA ARCserve tapes, performing online tape audits, creating duplicate archive tapes and cross-server management help make Backup Exec the ultimate backup solution for NetWare.

### Product Highlights:

- **Intuitive Graphical User Interface With Wizards** — facilitates installation, backup, recovery and report generation, providing enhanced management and functionality.
- **Pure IP Support** — allows users to manage Backup Exec from any Microsoft Windows 2000, Windows NT, Windows ME, Windows XP Professional, Windows 98 or Windows 95 system.
- **Media Management** — maximizes backup and restore performance through media pooling and media tracking.
- **Remote Agent Option\*** — allows fast backup of remote Novell NetWare 4.2, 5.x, 6.x and Microsoft Windows NT and Windows 2000 servers.
- **SAN Shared Storage Option\*** — allows tape libraries to be shared dynamically between multiple NetWare, Windows NT or Windows 2000 servers in a SAN.
- **Intelligent Disaster Recovery Option\*** — provides point-in-time recovery of local and remote NetWare 4.2 and 5.x servers, reducing downtime in the event of server failure. Bare-metal restoration allows rapid system recovery directly from diskettes, CD-R/RW or bootable tape without having to reinstall the OS manually.
- **Library Expansion Option\*** — adds support for additional drives within a tape library.
- **Open File Option\*** — protects every file on your server, including files in use, and provides comprehensive support for NetWare 4.2 and 5.x servers (does not support Novell Storage Services [NSS] volumes).
- **Working Set Backup** — a Backup Exec exclusive feature that automatically tracks the most recent work, accelerating protection and recovery of daily work.
- **CA ARCserveIT Tape Read Capability** — allows users to read and restore ARCserveIT 4, 5, 6 and 7.x non-interleaved tapes.

\* Option/Agent sold separately

Version 9.0



### Industry Firsts:

- First certified backup solution for NetWare 3.x, 4.x, 5.x and 6.x
- First intelligent disaster-recovery solution for NetWare 5
- First to support Novell Cluster Services
- First heterogeneous Fibre Channel SAN solution for mixed NetWare, Windows NT and Windows 2000 environments
- First to support Novell Storage Management Services (SMS) specification for NetWare backup

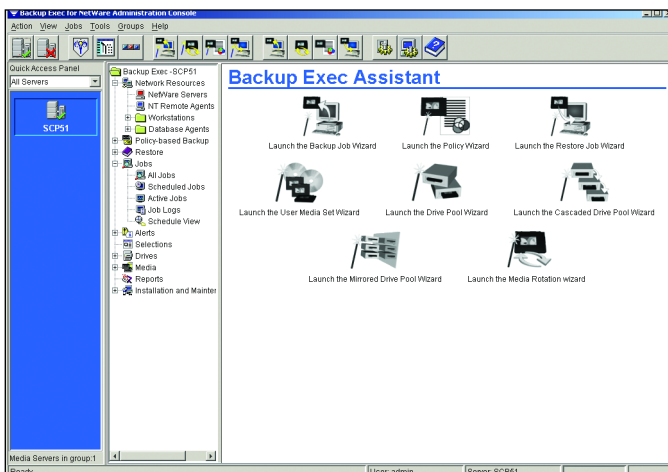
### Complete Protection for NetWare and Novell Storage Services

As the first backup solution to support Novell NetWare and Novell Storage Services (NSS), Backup Exec provides a reliable, high performance and easy-to-use backup solution for NetWare.

- Novell “Yes™ Tested and Approved” ensures compatibility.
- Support for the latest tape drive hardware provides access to the latest performance enhancements.

### NEW! Intuitive Graphical User Interface With Wizards

VERITAS Backup Exec's newly redesigned graphical user interface provides a shortcut bar that allows users to group media servers for easy navigation and increased manageability. Links to the install application facilitate installation of additional options such as Remote Agents for NetWare or Windows NT and Windows 2000, Library Expansion Option, Open File Option and SAN Shared Storage Option. Centralized password management allows setting or resetting of passwords from one centralized location, reducing management time. Integrated Calendar View and Holiday Scheduler enables jobs to be modified, added to or rescheduled from a single application. Create utility operations to erase or catalog tapes directly from the workstation, enhancing remote management capabilities. Integrated reporting allows users to view scheduled jobs, available media, device statistics, policy data and much more!



*Wizards simplify management with step-by-step detailed instructions for creating backup and restore jobs, drive pools and media sets.*

### NEW! Pure IP Support

VERITAS Backup Exec for NetWare 9.0 allows users to administer Backup Exec for NetWare from a system running Windows 2000, Windows NT 4.0, Windows ME, Windows XP Professional, Windows 98 or Windows 95, enabling remote manageability in a pure IP environment. Pure IP environments are highly efficient in reducing routing hardware and software requirements, freeing up scarce network bandwidth by up to 30 percent, eliminating the need to support other client protocols and creating greater opportunity for remote connectivity. With Pure IP support, administrators manage a single protocol delivering higher service levels without costly infrastructure upgrades.

### NEW! Media Management

Backup Exec's Media Management capabilities automate operation of standalone tape drives, single drive and multi-drive tape libraries\*\*. Built-in wizards help group backup devices into logical pools, create media sets and establish Grandfather-Father-Son media-rotation schemes. Automatic media labeling, cleaning, user-defined retention period, media statistics, catalogs displaying volume or media centric view, bar-code reader and portal support simplify day-to-day management. Drive pools allow jobs to run concurrently, and to be automatically directed to the first available drive using dynamic load balancing — for optimized performance. In the event a tape drive fails, the job is automatically rerouted to the next available drive in the pool, providing fault tolerant processing.

### NEW! Remote Agent — Engineered for Maximum Performance

The Remote Agents\*, with VERITAS' exclusive Agent Accelerator technology, are performance optimized to protect remote NetWare, Windows NT and Windows 2000 servers. Through its distributed processing and source compression, Backup Exec minimizes network traffic, maximizes performance and significantly reduces backup time.

### SAN Shared Storage Option\*

VERITAS Backup Exec SAN Shared Storage Option is the industry's first heterogeneous storage-area network (SAN) solution that allows tape libraries connected over a fibre-channel SAN to be shared dynamically between multiple NetWare, Windows NT or Windows 2000 VERITAS Backup Exec servers. The drives are connected to each host via enabling hardware, such as switches or hubs. SAN Shared Storage Option provides LAN-free backup to increase backup performance and LAN bandwidth for user applications.

### Intelligent Disaster Recovery Option\*

The Backup Exec for NetWare Intelligent Disaster Recovery Option provides simplified point-in-time recovery for local and remote NetWare servers that may have been physically damaged or reconfigured during an upgrade.

Using VERITAS Software's Intelligent Disaster Recovery with bootable tape drives, users can automate the recovery of data quickly and easily.

- Point-in-time disaster recovery — Provides a daily point-in-time server recovery process by using your most recent full, incremental or differential server backup to restore data.
- Comprehensive support — Includes NetWare NSS volume recovery.

\* Option/Agent sold separately

\*\* Requires Library Expansion Option

# VERITAS Backup Exec™ for NetWare

FEATURES	BENEFITS
<b>Performance, Availability, and Safety</b>	
Pure IP Support * <b>NEW!</b>	Allows manageability from a remote workstation or server in a pure IP environment
Calendar View Scheduler * <b>NEW!</b>	Easy viewing of job scheduling and backup operations
Holiday Calendar	Now specify days when the backup job scheduler will be offline
Intelligent Disaster Recovery Option*	Fast, simple recovery when disaster strikes — minimize lost time and reconfiguration chores
Support for bootable tape drives	Boot directly from tape to further speed disaster recovery — no diskettes to track or lose
Web-based ExecView Server Monitoring * <b>NEW!</b>	Web-based monitoring of NetWare, Windows NT and Windows 2000 Backup Exec servers
Media Management * <b>NEW!</b>	Easily set up media formatting, labeling, tracking, rotation, defining of retention periods and catalog viewing
Drive Pools * <b>NEW!</b>	Allow users to target a job to a set of available drives for easy failover
Media Sets * <b>NEW!</b>	Allow users to define media retention periods for improved reliability
Specified Backup Network (via NIC) * <b>NEW!</b>	Reduces network traffic by allowing users to reroute traffic off the general LAN to a second LAN via a specific NIC card
CA ARCserveIT Tape Read Capability	Read and restore CA ARCserveIT 4, 5, 6.x and 7.x noninterleaved tapes
Remote Agent for NetWare, Windows NT and Windows 2000 Servers*	Remote agent minimizes network traffic, reduces server utilization and frees bandwidth through source compression
Quick Check	Automatic, on the fly, data verification — rest assured that your data is truly saved on tape and can be restored
Tape Mirror	Create onsite and offsite tape copies simultaneously using standalone drives — one simple job creates two sets of tapes
Working Set Backup	Minimize work disruption by restoring most recently accessed data first — everyone gets back to work faster
<b>Heterogeneous Support</b>	
Windows 95/98/ME/Windows NT/Windows 2000/Windows XP Professional Support	Agents for many popular Windows workstation platforms included
Windows NT, Windows 2000 * <b>NEW!</b>	Remote Agent for Windows NT and Windows 2000 servers
UNIX Support***	Agents for many popular UNIX platforms
Linux Support***	Agents for many popular Linux platforms, including Red Hat, Caldera, Mandrake and SuSE
Macintosh Support***	Agent for Macintosh
<b>Comprehensive NetWare Support</b>	
Open File Option*	Backs up open files from NetWare 4.2 and 5.x (non-NSS) Supports GroupWise v5.5 and earlier versions
SAN Shared Storage Option*	First support for fibre channel storage area network (SAN) on NetWare and Novell Cluster Services
Library Expansion Option*	Expands storage capacity by adding support for additional drives within a tape library; enables accessing for storage and automatic multi-device concurrent backups (one Library Expansion Option is required for each additional drive)
Broad Novell NetWare Support	Certified "YES"™ Tested and Approved" on NetWare 4.2 and 5.x
Support for Novell Storage Services (NSS)	Protect NSS volumes quickly and reliably; Intelligent Disaster Recovery automatically recreates NSS volumes
Complete Novell Directory Services (NDS) Integration	Comprehensive directory protection and auto-schema extension
Used Internally by Novell	Rely on the backup solution that Novell uses

\* Option/Agent sold separately

\*\* Requires Library Expansion Option

\*\*\* For more information consult the Backup Exec Tech Support page at [http://support.veritas.com/menu\\_ddProduct\\_BENWARE.htm](http://support.veritas.com/menu_ddProduct_BENWARE.htm)

Version 9.0

## Redefining NetWare Data Protection

### System Requirements — NetWare

#### Media Servers: NetWare 4.2 or higher (requires IP protocol)

- 8MB RAM over server requirements
- 32MB RAM for Java server components
- 25MB disk space required
- Compatible tape device and controller
- Java Run-Time Environment (JRE) version 1.1.7b or 1.2.2 must be installed and loaded to run the Java-based Administration Console from the media server. JRE requires support pack 8 or higher for NetWare 4.x, support Pack 3 or higher for NetWare 5.0 (JRE 1.2.2 requires NetWare 5.1 with Support Pack 2A or higher)

#### Remote Servers: NetWare 4.2 or higher (requires IP protocol)

- 6MB RAM over server requirements
- 10MB disk space

#### Administration Console: Windows 95/98, Windows ME, Windows XP Professional, Windows NT and Windows 2000

- 128MB RAM minimum
- 25MB disk space
- Java Run-Time Environment (JRE) version 1.2 installed by Backup Exec to the local workstation

#### Remote Agents:

- Windows NT and Windows 2000
  - 250KB RAM, 6MB disk space
- Windows 95/98, Windows ME, as well as Windows XP Professional
  - 250KB RAM, 20MB disk space

#### Macintosh

- System 7.x using the ADSP (AppleTalk) interface (Power PC)

#### UNIX\*\*\*

- HP/UX 9.05, 10.01
- IBM AIX 3.2.5, 4.1
- Interactive 3.2
- SCO UNIX r3.2 – r4.x
- SCO Open Server r5 – v5.0.0
- SUN OS 4.1x
- Solaris x86 2.4, 2.5
- UnixWare 1.x, 2.01
- 15MB disk space (agent)

#### Linux\*\*\*

- Red Hat Linux v5.1, 5.2 and 6.0
- SuSE Linux v6.0
- Mandrake v6.0
- Caldera Linux v1.3

#### Supported Tape Formats

- CA ARCserve 4, 5, 6 and 7 for NetWare and ARCserve 2000 for Windows NT and Windows 2000 (read)
- SIFD ECMA-208 (read)
- Microsoft Tape Format (read/write)

#### Supported Tape Drives\*\*\*

- Most Dell, DLT, AIT, LTO, Travan, QIC, 4mm, and 8mm SCSI tape drives and libraries manufactured by ADIC, Aiwa, Archive, Compaq, DEC, Exabyte, HP, IBM, Iomega, Quantum, Seagate, Sony, Tandberg, WangDAT, Wagatek and others

#### Supported Controllers\*\*\*

- Most ASPI compliant controllers

### VERITAS Backup Exec™ for NetWare 9.0 Product Offerings

VERITAS Backup Exec for NetWare Server Edition includes support for one drive within a tape library. To support additional drives, you must purchase a Library Expansion Option for each additional drive.

- VERITAS Backup Exec for NetWare 9.0 Server Edition
- VERITAS Backup Exec for NetWare 9.0 Single Server to Server Edition Family Upgrade (to upgrade from previous Single Server Edition to 9.0 Server Edition)
- VERITAS Backup Exec for NetWare 9.0 Multi-Server to Server Edition Family Upgrade (to upgrade from previous Multi-Server Edition to 9.0 Server Edition)

### VERITAS Backup Exec™ for NetWare Options

- VERITAS Backup Exec Intelligent Disaster Recovery Option\*
- VERITAS Backup Exec Library Expansion Option\*
- VERITAS Backup Exec SAN Shared Storage Option\*
- VERITAS Backup Exec Remote Agent for NetWare\*
- VERITAS Backup Exec Remote Agent for Windows NT and Windows 2000\*
- VERITAS Backup Exec Open File Option\*

**Note:** Hardware support is continually updated. New devices may require the purchase of additional driver software or upgrades. If your device is not listed, please call the VERITAS Software FaxBack system at 407-531-7767 or check our Web site for the latest device support list.

\* Option/Agent sold separately

\*\* Requires Library Expansion Option

\*\*\* For more information consult the Backup Exec Tech Support page at [http://support.veritas.com/menu\\_ddProduct\\_BENWARE.htm](http://support.veritas.com/menu_ddProduct_BENWARE.htm)



**About VERITAS:** VERITAS Software Corporation (Nasdaq:VRTS) provides essential data availability software solutions that enable customers to protect and access their business-critical data for business without interruption.

### VERITAS Software Corporation

#### Corporate Headquarters

350 Ellis Street

Mountain View, CA 94043

650-527-8000 or 866-837-4827

For additional information about VERITAS Software, its products, or the location of an office near you, please call our corporate headquarters or visit our Web site at [www.veritas.com](http://www.veritas.com).